



About Mitsui E&S Group

In this section, we will introduce the Mitsui E&S Group's management philosophy, history, financial results for FY2020, progress of the Group's ongoing Business Revival Plan and Mid-Term Business Plan, and our direction for the future, through the words of our CEO.

Contents

Company Philosophy	03
History	04
Financial / Non-financial Highlights	06
Top Message	08

Philosophy

In August 2020, the Mitsui E&S Group has renewed its own awareness of the reasons for which it exists in view of changes in the surrounding circumstances as well as its own reforms and has revised its Management Policy and Standards of Conduct.

Company Philosophy

To continue working as a company trusted by society and individual through products and services we offer

Management Policy

Achieve new value creation together with customers
Seek a sound financial structure and steady profit
Construct an environment for working healthily and safely

Standards of Conduct

Endeavor to provide simple, unique and practical products and services

History

A 100-year history of tackling social issues and continuing to provide products that are essential to society

Origin

Established in response to contemporary needs, as the Shipbuilding Division of the former Mitsui & Co., Ltd.

In 1917, Teijiro Kawamura, who was the General Manager of the Ship Division of former Mitsui & Co. at the time, was acutely aware of the need to have a shipyard and a repair factory and submitted a petition to the president. The Mitsui E&S Group commenced from his passion.



Teijiro Kawamura

1917-

With the mission for modernizing. Leading Japan's shipbuilding industry since our founding

Taking on challenges for the modernization of Japan

This was the beginning of our history as one of Japan's leading shipbuilding companies.

1924

We built Akagisan Maru, Japan's first ship with a diesel engine.



Introduction of technologies on marine diesel engines

In 1926, Entered the technical licensing agreement with Burmeister & Wain A/S of Denmark for marine diesel engine production

1928

The first Mitsui-B&W diesel engine



1942

Changed company name to Mitsui Shipbuilding & Engineering Co., Ltd.

1950-

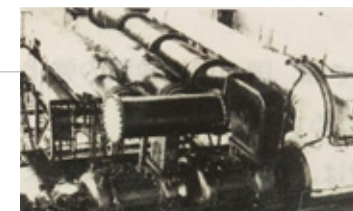
Expanding business domains Supporting Japan's rapid economic growth

Expanding the rotary machinery business

Beginning with the design of gas turbines, the company expanded into centrifugal and reciprocating compressors. It continued to make technological innovations, and later went on to design other rotary machinery such as axial compressors and steam turbines.

1950

Our first open-cycle marine gas turbine with 2,000 horsepower



Expansion into the crane industry

In 1961, Mitsui E&S signed a technology partnership / licensing agreement regarding container cranes with PACECO.,Inc. With the widespread adoption of containerization, Mitsui E&S went on to deliver many port cranes both in Japan and overseas.

1967

Japan's first quayside container crane is completed



2000-

Responding to globalization
Aiming for sustainable growth

Strengthening energy-saving and environmentally-friendly technologies

In response to the growing demand for environmentally friendly ships and energy-saving vessels, Mitsui E&S developed environmentally friendly products such as next-generation environmentally friendly and fuel-efficient vessels, and marine diesel engines that comply with international exhaust gas emissions regulations.

2010

The Neo Series of Next-Generation Eco Ships



Listing of MODEC, Inc.

In July 2003, MODEC, Inc. became the first member of the Group to be listed on the Tokyo Stock Exchange. On June 1 of the following year it became a First Section designated stock, and continues to make progress today.

2004

MODEC Inc. listed on the Tokyo Stock Exchange Market



2018-

Towards the next 100 years

Shift into holding company structure and changed its name to "Mitsui E&S Holdings"

The Group shifted to a holding company structure to accelerate efforts to deepen the level of Group management. At the same time the company name was changed to Mitsui E&S Holdings, marking a new step forward for the new Mitsui E&S Group.

2018

Changed its name to "Mitsui E&S Holdings"



Cumulative diesel engine production reaches 100 million horsepower

In October 2005 (77 years and 4 months after the production of our very first engine), we achieved cumulative production of 50 million horsepower. Over the next 12 years and 8 months, we added an additional 50 million to achieve total cumulative production of 100 million horsepower, 90 years after the production of our first engine in 1928.

2018

With this engine produced in 2018, the cumulative total power output reached 100 million horsepower

