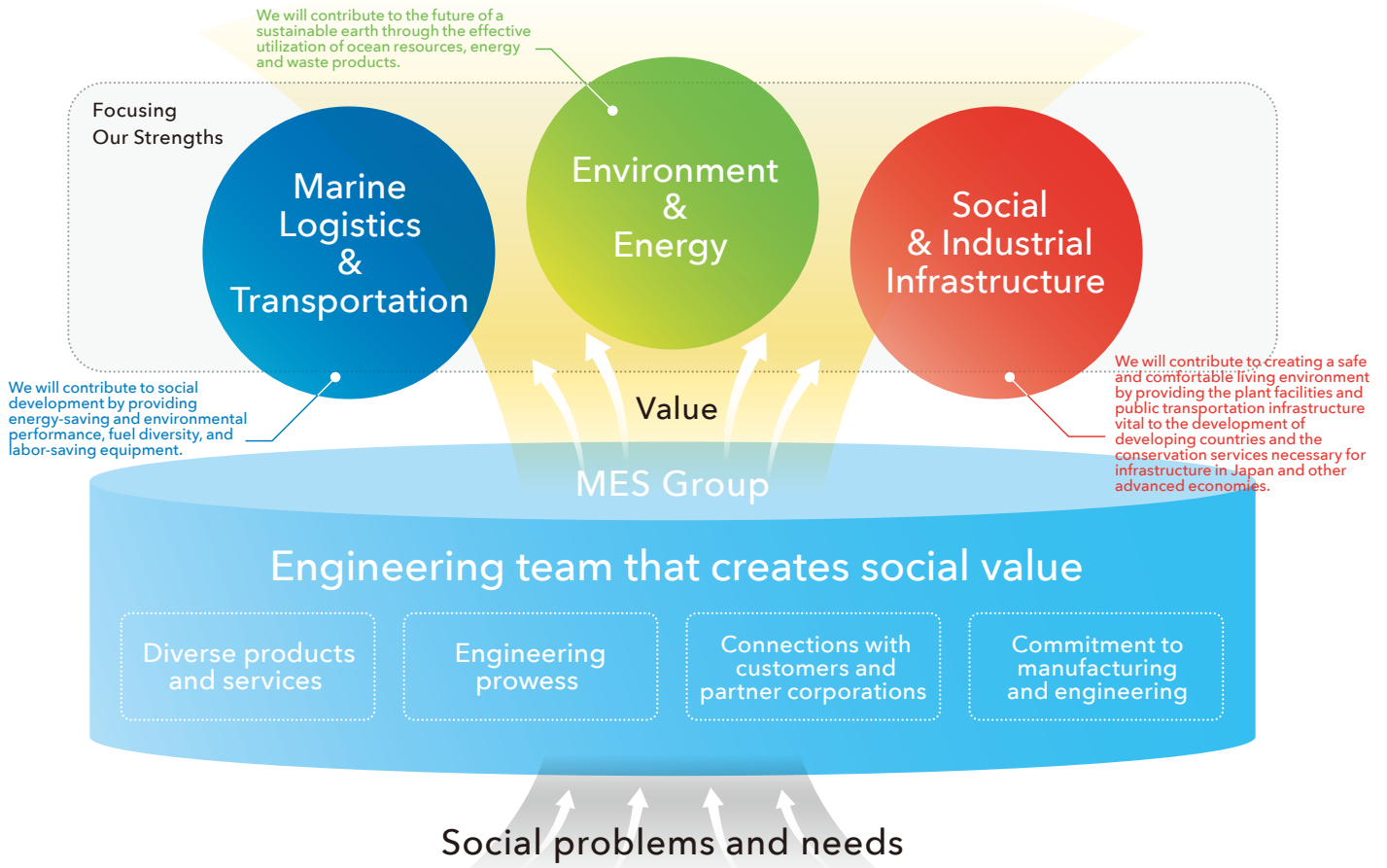
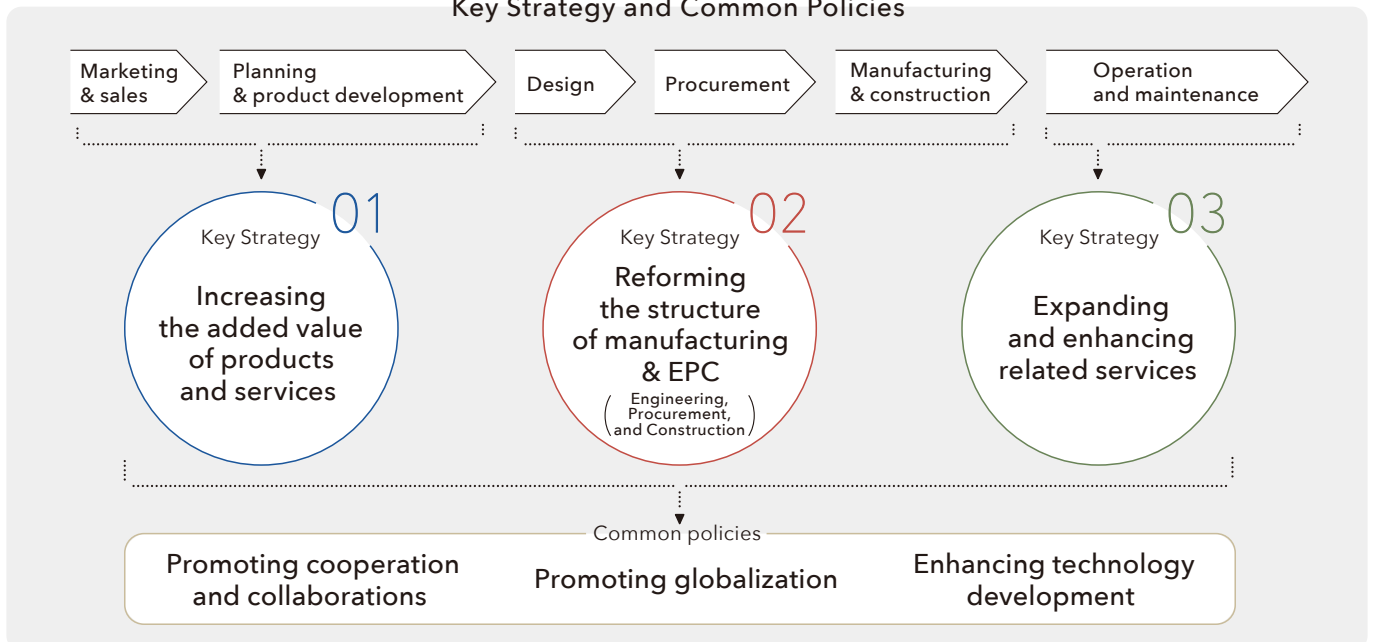


MES Group 2025 Vision

Realizing a better society



Key Strategy and Common Policies



Our three actions

- Switching our perspective from "external to internal"
- Proactively promoting internal and external collaborations
- Focus on increasing profit margin

Quantitative Target

Net sales of 1.1 trillion yen and an ordinary income rate of 6% by fiscal 2025.