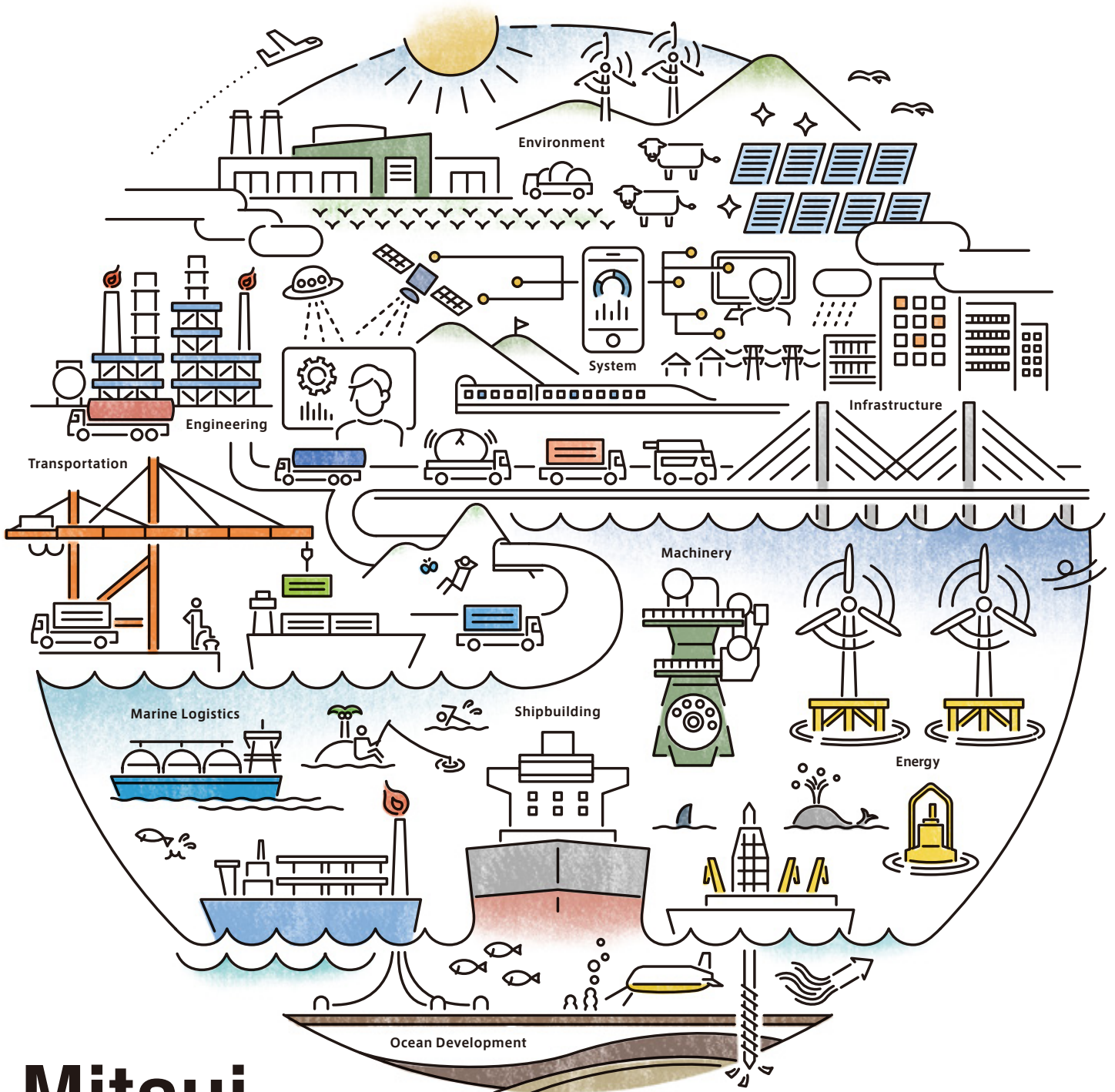


Action

Corporate Action Report 2017



Mitsui Engineering & Shipbuilding

100th
Anniversary

Contents

From the sea, onward

The power to travel on the sea is essential for the development of our country,
which is surrounded by the ocean.

Mitsui Engineering & Shipbuilding was established on November 14, 1917
with the mission of getting Japan to move forward.

Ships travel in the tough environment of the ocean while carrying lives.

Our job of building ships has brought out the great potential of
people and fostered numerous technologies.

Now, our technologies are applied not only in the marine engineering, but on the entire planet and beyond.

We have begun to work on global issues, including ones in the fields of the environment and energy.

In April 2018, MES will become Mitsui E&S Holdings Co., Ltd.

One hundred years after our foundation, we will instigate a new era with greater strength.



- 02 Action for "Environment & Energy"
- 04 Action for "Marine Logistics & Transportation"
- 06 Action for "Social & Industrial Infrastructure"
- 08 Topics : Ocean Resource Development

- 10 What's MES Group
- 12 History
- 14 Highlights
- 16 Message from the President

- 20 Medium- & Long-Term Management Plans
- 22 MES Group 2025 Vision
- 24 Mid-term Business Plan 2017

- 26 Business Segment Overview
- 28 Ship
- 30 Ocean Development
- 32 Machinery
- 34 Engineering
- 36 Research & Development

- 38 Corporate Governance
- 41 Outside Director Message
- 42 Communication
- 44 Environmental Preservation
- 47 Work Environment
- 48 Human Assets
- 50 Social Contributions

- 52 Company Profile



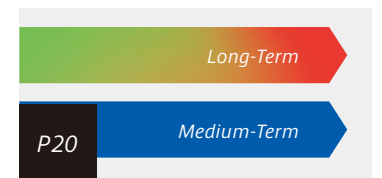
P02

Action Report



P16

Message from the President



P20

Medium- & Long-Term Management Plans



P26

Business Segment Overview

Editing Policy

Under our Company Philosophy of "To continue our role as a trusted company, and as a trusted member of society" we at Mitsui Engineering and Shipbuilding Co., Ltd. uphold our corporate philosophy as we strive to be a company that uses manufacturing to contribute to social development and preserve the global environment. We view all actions related to achieving this goal as collective approach towards the creation of corporate value.

The Corporate Action Report is a comprehensive summary of all the activities that we carried out in the fiscal year, covering management strategies, vital strategies, and the business status, as well as environment conservation activities and our social contribution initiatives. It is designed to provide stakeholders with greater insight into company operations.

Website pages

- ▶ Overall corporate activities <http://www.mes.co.jp/english/>
- ▶ Financial information <http://www.mes.co.jp/english/investor/>
- ▶ Non-financial information <http://www.mes.co.jp/english/company/>

Coverage of the report

- ▶ This report covers the period from April 2016 to March 2017. (However, some sections include information for April 2017 and thereafter.)
- ▶ Issued in: August 2017 (The last report was issued in July 2016. The next report is planned to be issued in August 2018.)

Guidelines used as reference

- Ministry of the Environment, Environmental Reporting Guidelines
- GRI, Sustainability Reporting Guidelines Version 4
- ISO 26000

Disclaimers

This report contains plans and forecasts that were current as of the date of publication, as well as descriptions about our future business activities based on our management plans. Please note that this information is based on the currently available information, and the actual contents of our business activities may differ from the contents of this report due to future circumstances or the environment, or due to unanticipated events that may occur after the publication of this report.

In April 2018, the MES Group will become Mitsui E&S Holdings Co., Ltd.



<http://www.mes.co.jp/>